

2020
ESCAPE

S | SE | SEL





**FWD
OR INTELLIGENT
AWD¹**

5
SELECTABLE
DRIVE
MODES

BUILT FOR MEMORABLE MOMENTS.

Spontaneity. It's what makes life more... extraordinary. Adventure beckons at a moment's notice. To help you respond, we reimagined what it means to ESCAPE. Then we built it. Giving it a fresh new look. A spacious, adaptable interior. Advanced connectivity. And proven capability with Intelligent AWD¹ to handle whatever obstacles the city – or the weather – puts in your path. So what are you waiting for? Go find that trail off the beaten path or a secluded camping spot in the all-new 2020 Ford Escape.

NEW
8-SPEED
AUTOMATIC
TRANSMISSION

1.5L
ECOBOOST[®]
ENGINE

U.S. model shown.

SEL. Star White Metallic Tri-coat. Available equipment. ¹Available feature.

2020 ESCAPE | S | SE | SEL

caribe.ford.com | centroamerica.ford.com





FRESH ESCAPE FROM THE ORDINARY.

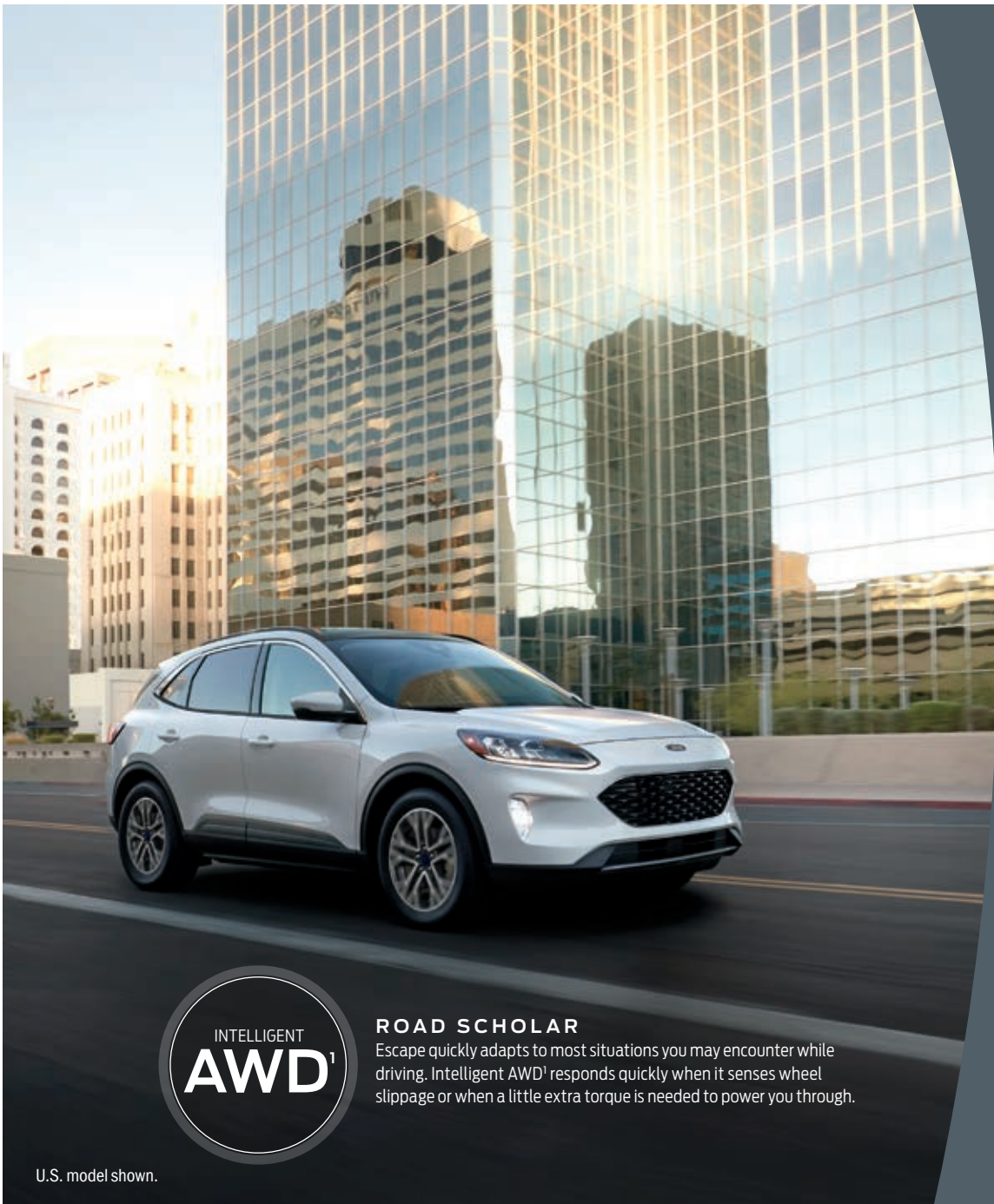
Sleek and energetic only begin to describe the renewed look of Ford Escape. A sloped hood and A-pillar design lets air slide over its body with little resistance. Its lowered stance allows for road-hugging agility when navigating city streets and twisting mountain roadways. Available 18" aluminum wheels and a molded rear fascia give it a bold, sporty look and feel.

SEL. Rapid Red Metallic Tinted Clearcoat. Available equipment.

2020 ESCAPE | S | SE | SEL

caribe.ford.com | centroamerica.ford.com





ROAD SCHOLAR
Escape quickly adapts to most situations you may encounter while driving. Intelligent AWD¹ responds quickly when it senses wheel slippage or when a little extra torque is needed to power you through.

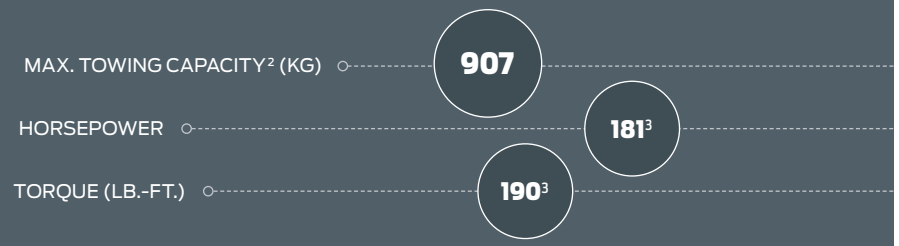
U.S. model shown.

EMPOWERS YOU TO ROAM.

[1.5L ECOBOOST® WITH AUTO START-STOP TECHNOLOGY]
GO FURTHER WITH LESS.

To help conserve fuel, the all-new 1.5L EcoBoost with Auto Start-Stop can sense when a cylinder isn't needed and shut it down automatically. The system can activate or deactivate a cylinder in milliseconds to maintain a seamless ride.

FWD Standard on S, SE, SEL
AWD Optional on SEL



SEL. Star White Metallic Tri-coat. Available equipment. ¹Available feature. ²When properly equipped. ³Horsepower and torque ratings based on premium fuel per SAE J1349® standard. Your results may vary.



8"

LCD TOUCHSCREEN

Smartphone users can view the Waze™ app here, thanks to SYNC® AppLink.^①



U.S. model shown. Screen display varies by market.

6

SPEAKERS

You can't go anywhere without your jams. Speakers strategically placed throughout the front and rear deliver crystal clear sound for the ultimate in traveling enjoyment.

STAY WELL-ADJUSTED

The available 10-way power driver's seat and tilt/telescoping steering column help provide a comfortable driving experience.

DIAL IN SPACE

A nicely calibrated rotary gear shift dial on the streamlined center console frees up space to create a roomier front-row experience.

SEL. Ebony ActiveX seating surfaces. Available equipment. ^①Availability varies by market.



NORMAL

You'll probably spend the most time here. Ideal for everyday driving on wet or dry paved roads. A balance of excitement and convenience.

SPORT

Increases throttle response, provides quicker shifts for a more aggressive feel, and allows the transmission to hold shifts longer to help Escape accelerate faster when shifting. For more "sporty" on-road driving.

ECO

Exactly as it sounds. Helps deliver maximum fuel efficiency and increased driving range.

SLIPPERY

For better handling on surfaces covered with ice, water, grass or gravel, this mode adjusts the transmission shift schedule, pedal response and traction control.

DEEP SNOW/SAND

Adjusts the transmission shift schedule, pedal response, traction control and driveline configuration for better handling in deep snow or sand. Intelligent AWD¹ only.



MATCH YOUR MODE TO THE ROAD.

Create the ride experience you desire, or the one that conditions demand, with new Selectable Drive Modes. Select a mode and AdvanceTrac® with RSC® (Roll Stability Control™) and traction control automatically adjust to help improve driving and handling.

U.S. model shown.

¹Available feature.

2020 ESCAPE | S | SE | SEL

caribe.ford.com | centroamerica.ford.com





U.S. model shown.

READY WITH AN ASSIST.

From the driveway to the highway, Ford Co-Pilot360™ Technology¹ is designed to help you feel confidently in command. Even more inspiring: it comes standard on all 2020 Ford Escape models.

FORD CO-PILOT360 TECHNOLOGY



PRE-COLLISION ASSIST WITH AUTOMATIC EMERGENCY BRAKING²

We should all drive defensively. By scanning the road ahead, this feature can alert you to potential collisions with vehicles or pedestrians in your path. If an impact is imminent and you don't take action, brakes can apply automatically. It only activates when needed.



BLIS® WITH CROSS-TRAFFIC ALERT

Changing lanes demands your full attention. BLIS (Blind Spot Information System) can help by alerting you to vehicles detected in your blind spots. Cross-Traffic Alert helps by detecting and alerting you to traffic behind you as you're slowly backing up.



LANE-KEEPING SYSTEM³

It happens. Listening to your favorite podcast, you wander too close to your lane's edge. Our Lane-Keeping System can help during a moment of distraction. If you drift out of your lane, it directs you with steering wheel torque to return, and can also alert you through vibration pulses. Stray a few times and a coffee cup icon lets you know it's time to take a break.



AUTO HIGH-BEAM HEADLAMPS

Sound familiar? You turn on high beams entering a dark stretch of road – then forget to turn them off as traffic approaches. Auto High-Beam Headlamps can detect poor lighting and switch them on for you. They can also sense oncoming headlamps and dim automatically for other drivers.



REAR VIEW CAMERA

Backing up requires a little multitasking. Our Rear View Camera helps by providing a great view of what's behind your vehicle. It also helps when you're lining up a trailer.

Standard on every 2020 Ford Escape

¹Driver-assist features are supplemental and do not replace the driver's attention, judgment and need to control the vehicle. ²Pre-Collision Assist with AEB can detect pedestrians, but not in all conditions and does not replace safe driving. See owner's manual for system limitations. ³Lane-Keeping System does not control steering.

ADDITIONAL TECHNOLOGY¹



EVASIVE STEERING ASSIST

We've all experienced it. Traffic is rolling along smoothly when suddenly, a vehicle in your path is stopped. To help avoid a potential collision, Evasive Steering Assist can provide extra assist to help you quickly steer around the vehicle.



ADAPTIVE CRUISE CONTROL (ACC) WITH STOP-AND-GO

There are few things as tedious as bumper-to-bumper traffic. ACC with Stop-and-Go can help you keep pace on your journey, slowing down or even stopping your vehicle if the traffic ahead has slowed or stopped. When things clear, it can resume your set speed.²



VOICE-ACTIVATED NAVIGATION³

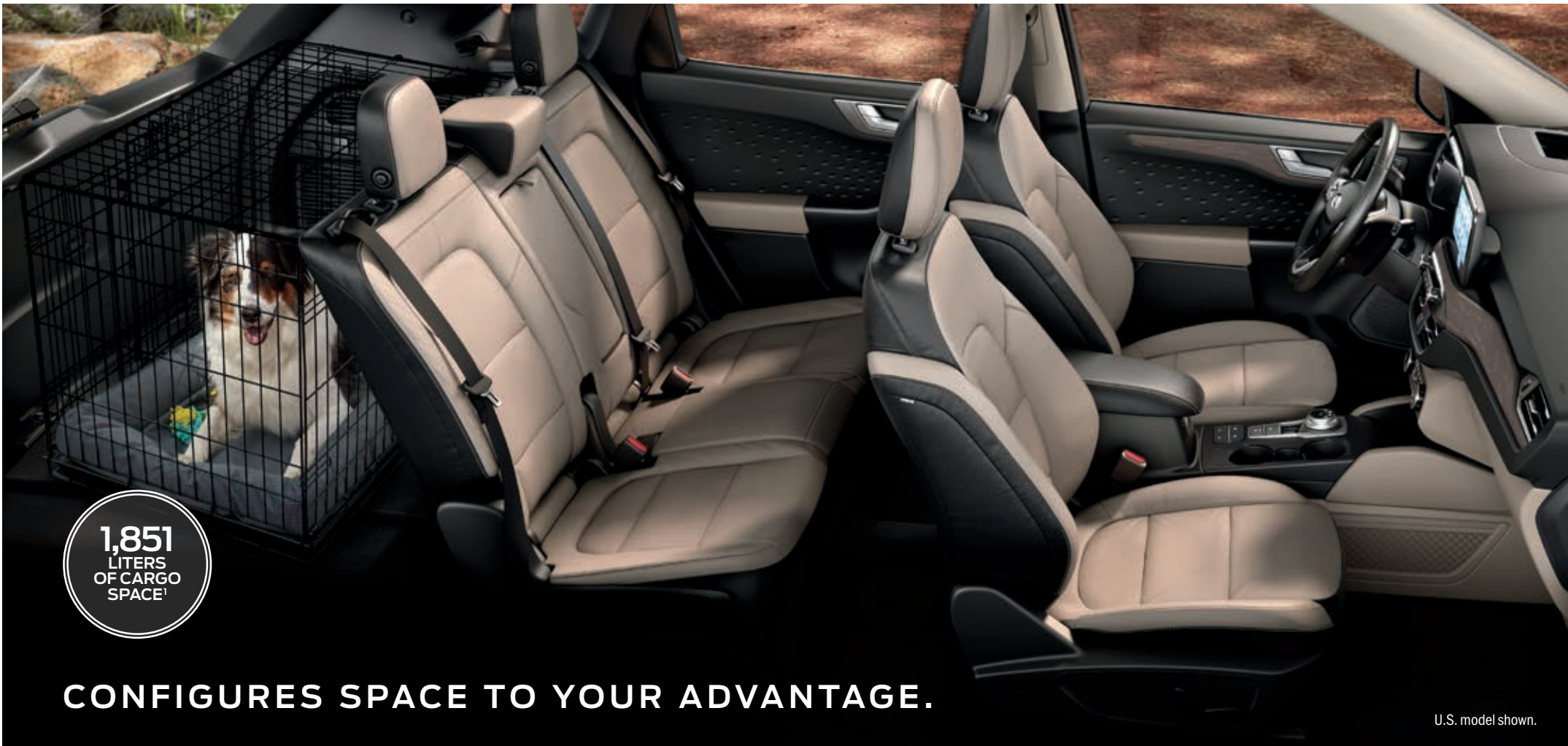
Taking the wrong exit can put a serious dent in your day. Stay confidently on course with Voice-Activated Navigation.

Available on SE and SEL



¹Driver-assist features are supplemental and do not replace the driver's attention, judgment and need to control the vehicle. ²If stop is longer than 3 seconds, driver must intervene and press "RES" button or accelerator pedal to resume system operation. ³Availability varies by market.

U.S. model shown.



1,851
LITERS
OF CARGO
SPACE¹

CONFIGURES SPACE TO YOUR ADVANTAGE.

U.S. model shown.

MAXIMIZES CARGO SPACE

With 1,851 liters of max. cargo space¹ with the sliding rear seats fully forward, a full-size dog crate can fit in the Escape cargo area. A cargo shade² that rises and lowers along with the liftgate helps keep items out of sight.

60/40 SPLIT-SEAT VERSATILITY

Escape is capable of many things, including creating extra cargo room while still being able to take additional passengers along for the ride.

2,944
LITERS

Total passenger volume

Available equipment. ¹Cargo and load capacity limited by weight and weight distribution. ²Available feature.

2020 ESCAPE | S | SE | SEL

caribe.ford.com | centroamerica.ford.com



ENCOURAGES YOU TO ESCAPE.

The original Escape debuted in the 2001 model year. In its first full year on sale, it quickly became America's best-selling small SUV. In reinventing the Escape for 2020, this rich history gave us plenty to build on. While the world – and technology – has experienced rapid change over 19 years, the purpose of Escape remains the same: to help you embrace life's adventures with contemporary style and remarkable versatility. These are just some of the new features that will help.



A

ROTARY GEAR SHIFT DIAL

COMFORTABLY FITS 3 ADULT
REAR-SEAT PASSENGERS

SLIDING 2ND-ROW SEATS

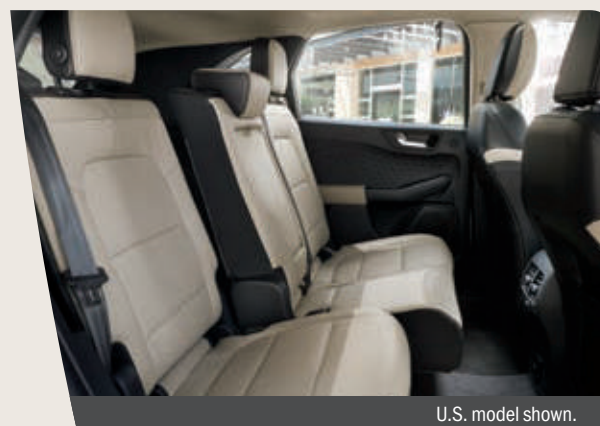


B

REAR CARGO AREA CAN HOLD
A FULL-SIZE PET CRATE

CARGO SHADE RAISES AND
LOWERS WITH LIFTGATE¹

LARGE GLOVE BOX



¹Available feature.



YOUR TECH, YOUR WAY.

With seating for up to 5 and an array of USB and 12V powerpoints throughout, Escape allows you to bring smartphones, tablets, and computers along for the ride. With our Voice-Activated Touchscreen Navigation System,^{1,2} finding your way to just about anywhere is simple. So escaping the daily grind is made easier and enjoyable.



androidauto

COMMAND IT

With your voice and your choice of display, SYNC[®] 3 voice-activated technology^{1,2,3} connects your tech with your Escape. SYNC 3 AppLink^{®2,4} (shown) gives you voice control of compatible mobile apps like Waze.[™] To see your phone's familiar interface on the big screen, take advantage of compatibility with Apple CarPlay^{®2,5} for your iPhone[®] or Android Auto^{™2,5} for your Android[™] smartphone.

¹Available feature. ²Availability varies by market. ³Don't drive while distracted. Use voice-operated systems when possible; don't use handheld devices while driving. Some features may be locked out while the vehicle is in gear. Not all features are compatible with all phones. Functionality varies by market. ⁴Certain restrictions, 3rd-party terms and data rates may apply. See your Ford Dealer for details. Commands may vary by phone and AppLink software. ⁵Requires device with active data service and compatible software. SYNC does not control 3rd-party products while in use. 3rd parties are solely responsible for their respective functionality.



U.S. model shown.
Screen display varies by market.

Android, Android Auto and Waze are trademarks of Google Inc. Apple, Apple CarPlay and iPhone are trademarks of Apple Inc., registered in the U.S. and other countries.

2020 ESCAPE | S | SE | SEL

caribe.ford.com | centroamerica.ford.com





U.S. model shown.

MAINTAINS STABILITY

To help provide a smooth and comfortable ride, Ford engineers gave Escape an upgraded suspension system. And electric power-assisted steering offers greater assist at low speeds to help in parking and other maneuvers.

PERFORMS SMARTLY

The 1.5L EcoBoost® debuts cylinder deactivation, which can sense when a cylinder isn't needed and shut it down automatically. All-Wheel Drive (AWD)¹ Disconnect allows for the disconnection of the rear driveline when the system detects AWD isn't needed.

HANDLES CHALLENGES IN STRIDE.

With extensive use of lightweight, high-strength steel and high-strength boron steel, the all-new 2020 Ford Escape weighs in over 90 kg less than its predecessor. Along with a smooth and responsive 8-speed automatic transmission and an upgraded suspension system with a new isolated rear subframe, these improvements allow you to blaze new trails in calm and comfort.

SEL. Rapid Red Metallic Tinted Clearcoat. Available equipment. ¹Available feature.

2020 ESCAPE | S | SE | SEL

caribe.ford.com | centroamerica.ford.com



GIVES YOU SPACE TO ESCAPE.

MAX. EXTERIOR DIMENSIONS [mm]

Wheelbase: **2,710**
Length: **4,584**
Height: **1,678**
Width – Mirrors folded: **2,000**
Width – Including mirrors: **2,174**

MAX. INTERIOR DIMENSIONS [mm]

Front/Rear
Head room: **1,017 / 999**
Leg room: **1,077 / 1,035**
Hip room: **1,403 / 1,355**
Shoulder room: **1,464 / 1,423**

MAX. INTERIOR CAPACITIES [liters]

Cargo volume behind front row:¹ **1,851**
Cargo volume behind rear row: **1,061**

U.S. model shown.

¹With rear seats folded down. Cargo and load capacity limited by weight and weight distribution.

2020 ESCAPE | S | SE | SEL

caribe.ford.com | centroamerica.ford.com



S

SELECTABLE DRIVE MODES

LED TAILLAMPS

FORD CO-PILOT360™

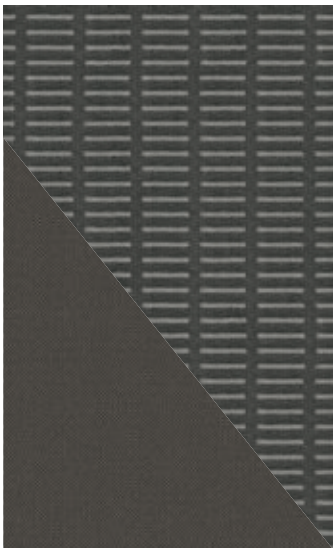
Daily victories start here. Turn the new rotary gear shift dial to Reverse. Before you're even out of your spot, the Rear View Camera¹ and the sensors from Cross-Traffic Alert¹ pick up a vehicle driving by in the parking garage. Bad morning, averted. On the road, a light rain makes the surface slick. Adjust the Selectable Drive Mode to Slippery to increase your control. Need to call the office before you arrive? SYNC[®] voice-activated technology² can place the call while your phone is still in your duffel bag. The day hasn't even begun, and you're already on top of your game. Thanks to the all-new Escape S.



COLORS: Desert Gold³ Velocity Blue³ Oxford White, Ingot Silver³ Dark Persian Green³ Magnetic³ Agate Black³ Sedona Orange³

Available equipment shown. ¹Driver-assist features are supplemental and do not replace the driver's attention, judgment and need to control the vehicle. ²Don't drive while distracted. Use voice-operated systems when possible; don't use handheld devices while driving. Some features may be locked out while the vehicle is in gear. Not all features are compatible with all phones. Functionality varies by market. ³Metallic.





17"
STEEL WITH SPARKLE
SILVER-PAINTED COVERS
Standard



17"
SHADOW SILVER-PAINTED
ALUMINUM
Optional

CLOTH SEATING SURFACES: Dark Earth Gray



Screen display varies by market.

1.5L ECOBOOST®
WITH AUTO START-STOP TECHNOLOGY
8-SPEED AUTOMATIC TRANSMISSION

ESCAPE S STANDARD FEATURES:

MECHANICAL

- Active grille shutters
- Electric power-assisted steering
- Front-wheel drive (FWD)
- Mini spare wheel and tire
- Power disc brakes with Anti-Lock Brake System (ABS)
- Selectable Drive Modes
- Torque Vectoring Control

FORD CO-PILOT360™ TECHNOLOGY

- AdvanceTrac® with RSC® (Roll Stability Control™) and Curve Control
- Auto Hold
- Autolamp Automatic On/Off Headlamps
- Ford Co-Pilot360:** Auto High-Beam Headlamps; BLIS® (Blind Spot Information System) with Cross-Traffic Alert; Lane-Keeping System (includes Lane-Keeping Assist, Lane-Keeping Alert and Driver Alert); Pre-Collision Assist with Automatic Emergency Braking (AEB) (includes Pedestrian Detection, Forward Collision Warning, and Dynamic Brake Support); and Rear View Camera Post-Collision Braking

APPEARANCE

- Black, power sideview mirrors and exterior door handles
- Wiper-activated halogen reflector headlamps with courtesy delay

COMFORT & CONVENIENCE

- 6-way manual driver's seat and 4-way manual front-passenger seat
- 12V powerpoints (3)
- 60/40 split-fold rear seat with slide and recline
- Daytime running lamps
- Dual chrome exhaust tips
- Easy Fuel® capless fuel filler
- Hooks for cargo tie-down (2) and groceries (2)
- Illuminated Entry System

Manual-tilt/-telescoping steering column

- Particulate air filter
- Power door locks with autolock and auto unlock
- Power windows with driver one-touch-down feature
- Steering wheel-mounted cruise and audio controls
- Variable-intermittent front windshield wipers with washer; rear wiper with washer

CONNECTIVITY & ENTERTAINMENT

- AM/FM stereo with 6 speakers
- SYNC® Voice Recognition Communications and Entertainment System with 4.2" LCD screen in center stack, and 2 smart-charging USB ports

SAFETY & SECURITY

- Personal Safety System™ for driver and front passenger includes dual-stage front airbags¹; safety belt pretensioners, safety belt energy-management retractors, safety belt usage sensors, driver's seat position sensor, crash severity sensor, restraint control module and Front-Passenger Sensing System
- Driver's knee airbag¹
- Front-seat side airbags¹
- Safety Canopy® System with side-curtain airbags¹ and rollover sensor
- Front height-adjustable shoulder safety belts
- MyKey® technology
- SecuriLock® Passive Anti-Theft System
- SOS Post-Crash Alert System™
- Tire Pressure Monitoring System (excludes spare)

AVAILABLE OPTIONS FOR ALL MODELS

- Cargo mat
- Cargo shade
- Engine block heater
- Front and rear floor liners
- Supplemental PTC heater

Available equipment shown. ¹Always wear your safety belt and secure children in the rear seat.



SE

CHROME GRILLE SURROUND

HEATED FRONT SEATS

POWER, HEATED SIDEVIEW MIRRORS

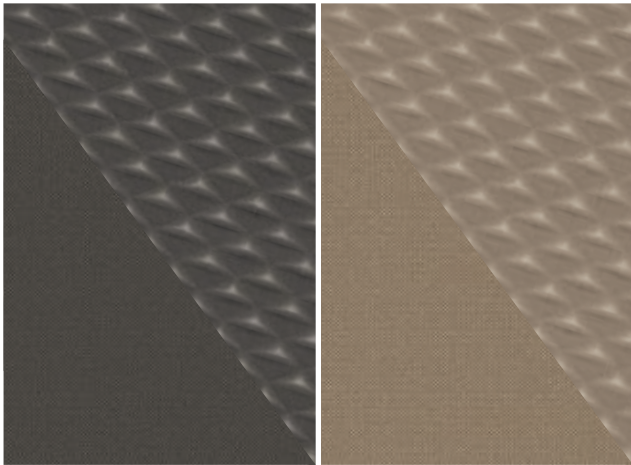
The E stands for Extras. Escape SE gives you more. With all the added features you get, SE makes for a more enjoyable driving experience. Start with electronic automatic temperature control and heated front seats that add a touch of sophistication to Escape. You can even get more Ford Co-Pilot360™ Technology with Ford Co-Pilot360 Assist.¹ These options join SE standards such as Intelligent Access with push-button start, and the SecuriCode™ invisible keypad. Having so many choices is a great option to have.



COLORS: Desert Gold,² Velocity Blue,² Oxford White, Ingot Silver,² Dark Persian Green,² Magnetic,² Agate Black,² Sedona Orange,² Rapid Red Metallic Tinted Clearcoat,³ Star White Metallic Tri-coat³

Available equipment shown. ¹Available feature. ²Metallic. ³Additional charge.





CLOTH SEATING SURFACES: Dark Earth Gray or Sandstone



17"
SHADOW SILVER-PAINTED
ALUMINUM
Standard

1.5L ECOBOOST®
WITH AUTO START-STOP TECHNOLOGY
8-SPEED AUTOMATIC TRANSMISSION STANDARD

SE INCLUDES SELECT S FEATURES, PLUS:

APPEARANCE

Body-color, power, heated sideview mirrors
Chrome grille surround and upper window moldings
Halogen projector-beam headlamps
Privacy glass (rear door windows, rear quarter windows and liftgate window)

COMFORT & CONVENIENCE

10-way power driver's seat with power lumbar and recline
Electronic automatic temperature control
Front-passenger seat back map pocket
Heated front seats
Illuminated visor mirrors
Intelligent Access with push-button start
Rear-seat center armrest
SecuriCode™ invisible keypad

CONNECTIVITY & ENTERTAINMENT

SYNC® 3 with 8" LCD capacitive touchscreen in center stack, Apple CarPlay®¹ compatibility, Android Auto™¹ compatibility, and 2 smart-charging USB ports

OPTIONS & PACKAGES

Ford Co-Pilot360™ Assist: Adaptive Cruise Control with Stop-and-Go; Evasive Steering Assist; and Voice-Activated Touchscreen Navigation System¹ with pinch-to-zoom capability

Also see "Available Options for All Models" on the Escape S specifications page.

Available equipment shown. ¹Availability varies by market.



SEL

HANDS-FREE, FOOT-ACTIVATED LIFTGATE

FOG LAMPS

REMOTE START SYSTEM

If your tastes reveal a sophisticated nature, Escape SEL will more than satisfy. Fog lamps and 18" aluminum wheels with painted pockets adorn the exterior. Inside, new contoured front bucket seats feature durable, high-end synthetic ActiveX seating material. Remotely start SEL, and even your leather-wrapped, heated steering wheel will be ready for adventure. And Intelligent AWD¹ allows you to move freely the way you choose.



COLORS: Desert Gold² Velocity Blue² Oxford White, Ingot Silver² Dark Persian Green² Magnetic² Agate Black² Sedona Orange² Rapid Red Metallic Tinted Clearcoat³ Star White Metallic Tri-coat³

Available equipment shown. ¹Available feature. ²Metallic. ³Additional charge.





ACTIVE X SEATING SURFACES: Sandstone or Ebony



18"
MACHINED-FACE ALUMINUM WITH
DARK STAINLESS-PAINTED POCKETS
Standard

1.5L ECOBOOST®
WITH AUTO START-STOP TECHNOLOGY
8-SPEED SELECTSHIFT® AUTOMATIC TRANSMISSION

SEL INCLUDES SELECT SE FEATURES, PLUS:

FORD CO-PILOT360™ TECHNOLOGY

Reverse Sensing System

COMFORT & CONVENIENCE

Hands-free, foot-activated liftgate

Leather-wrapped, heated steering wheel

Power driver's seat and sideview mirrors with
memory feature

Power windows with one-touch-up/-down feature

Remote Start System

APPEARANCE

Black roof-rack side rails

Fog lamps

OPTIONS & PACKAGES

Ford Co-Pilot360™ Assist: Adaptive Cruise Control with
Stop-and-Go; Evasive Steering Assist; and Voice-Activated
Touchscreen Navigation System¹ with pinch-to-zoom capability
Intelligent AWD System

*Also see "Available Options for All Models" on the Escape S
specifications page.*

Available equipment shown. ¹Availability varies by market.





FORD ACCESSORIES



PERSONALIZE IT.

For some people, aluminum wheels and splash guards are enough to set their vehicle apart. But others want to make their Escape truly their own. Ford Accessories allow you to personalize your Escape to your exact needs, interests, hobbies and more. And each accessory is designed specifically for your Escape, so you can be assured of a perfect fit. See your dealer for a complete list of available Ford Accessories.

accessories.ford.com

Ford Genuine Parts & Service. Keep your vehicle in optimum operating condition with scheduled maintenance service. Ford and Lincoln Dealership technicians know your vehicle inside and out. They are continuously trained by Ford Motor Company and the parts they use are specifically designed for your vehicle. □ See your dealer for limited warranty information on Ford Original Accessories. Ford Licensed Accessories (FLA) are warranted by the accessory manufacturer's warranty. FLA are designed and developed by the accessory manufacturer and have not been designed or tested to Ford Motor Company engineering requirements. Contact your Ford Dealer for details and/or a copy of all limited warranties.

Comparisons based on competitive models excluding other Ford vehicles (class is Small Utilities based on Ford segmentation), publicly available information and Ford certification data at time of printing. Vehicles may be shown with optional equipment which may or may not be available in your market. Features may be offered only in combination with other options or subject to additional ordering requirements/limitations. Dimensions shown may vary due to optional features and/or production variability. Information is provided on an "as is" basis and could include technical, typographical or other errors. Ford makes no warranties, representations, or guarantees of any kind, express or implied, including but not limited to, accuracy, currency, or completeness, the operation of the information, materials, content, availability, and products. Ford reserves the right to change product specifications, pricing and equipment at any time without incurring obligations. Your Ford or Lincoln Dealer is the best source of the most up-to-date information on Ford and Lincoln vehicles. Colors are representative only. See your dealer for actual paint/trim options.

©2019 Ford Motor Company

2020 ESCAPE | S | SE | SEL

caribe.ford.com | centroamerica.ford.com

